



Louisiana Health Care
QUALITY FORUM

APRIL 2021

PROFILE:

Louisiana's Health Care Quality Forum

WORKING TOGETHER for a
HEALTHIER STATE



Louisiana Health Care
QUALITY FORUM

MISSION

We are dedicated to leading evidence-based, collaborative initiatives to improve the health of Louisiana residents.

VISION

We will be the recognized leader in driving fundamental improvement in health and health care in Louisiana.



ORGANIZATIONAL HISTORY

Louisiana's Health Care Landscape: An Overview

Louisiana is ranked among the bottom 10 states for overall health care quality, including 26th for health care access, 47th for healthcare quality and 47th for public health (*US News and World Report Healthcare Rankings, 2021*). The State of Louisiana spends the most on Medicare beneficiaries per capita but reports greater disparities in health status and death rates than other states. In 2019, Louisiana experienced 604 Emergency Department visits per 1,000 citizens (*Kaiser Family Foundation State Health Facts*), which was the highest total visits per 1,000 in the United States.

However, the state is showing progress in some areas. Compared to the rest of the nation, Louisiana's health care costs per person have landed in the middle, ranking 29th in per-person spending in 2018, with an average citizen spending more than \$5,000 on health care (*Health Care Cost Institute Report*). This reflects an improvement, compared to data collected in 2013. Louisiana remains below the national average for the percentage of uninsured adults between 19 and 64, and below the national average for the percentage of uninsured children. Both rates continue to decline (*Louisiana Department of Health, Louisiana Health Insurance Survey, 2019*).

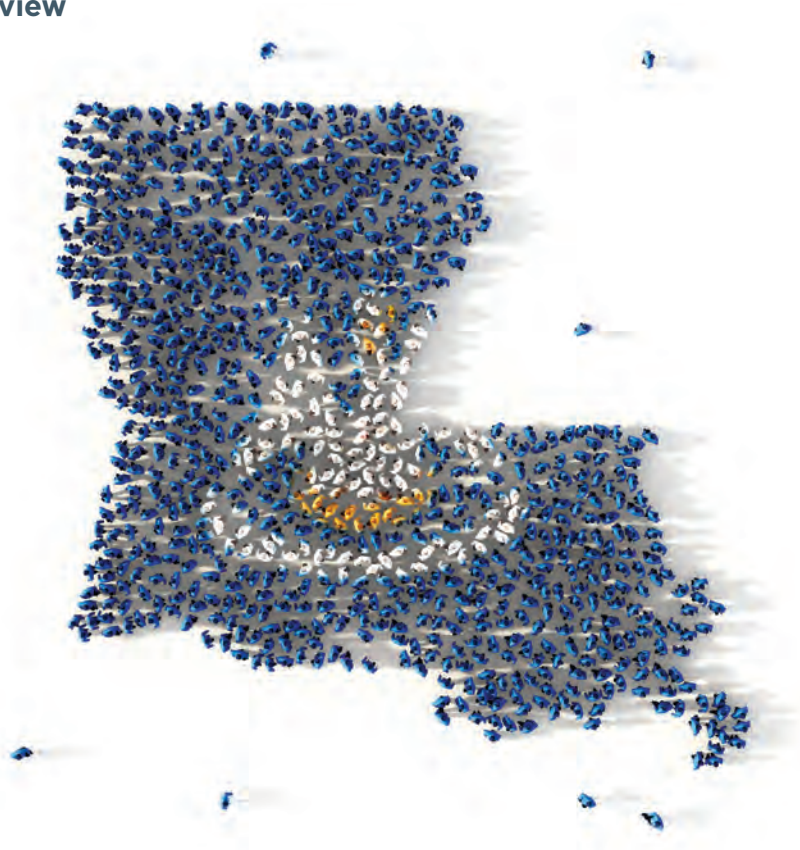
Still, the state has ranked among the worst in the nation for overall health status, infant mortality, preventable hospitalizations, chronic disease and infectious disease incidences (*United Health Foundation, America's Health Rankings Annual Report, 2020*). As of April 2021, the state had reported more than 453,000 cases of COVID-19, accounting for more than 10,000 deaths. Now is the time to build off of the awareness of the recent public health crisis and continue to improve health care in Louisiana.

The Impact of Hurricanes Katrina and Rita

Although Louisiana's health care issues had existed for many years, they became even clearer in the aftermath of Hurricanes Katrina and Rita in 2005. The storms devastated the health care system in Louisiana's coastal regions and left hundreds of thousands of residents displaced and without access to their health information, causing significant gaps and delays in care delivery that yielded poor outcomes and reduced quality of care.

However, the hurricanes also left behind an unparalleled opportunity to improve health care for the state's residents. Local and state leaders and stakeholders recognized the urgency of creating a more cost-effective and quality-focused health care system for Louisiana and began efforts to drive these improvements.

These efforts began with the development of the **Louisiana Health Care Redesign Collaborative** in 2006. Created by **House Concurrent Resolution 127**, the collaborative, under the direct authority of LDH and composed of a broad spectrum of providers, payers, patients and other stakeholders, was charged with developing a blueprint for a health care system that is "driven by quality and incorporates evidence-based practices and accepted standards of care" (*Louisiana Health Care Redesign Concept Paper, Oct. 2006*).



The Louisiana Health Care Quality Forum

The recommendations made by the Louisiana Health Care Redesign Collaborative to the state legislature included:

- The expansion of Medicaid coverage to uninsured children, pregnant women, parents, individuals with disabilities and childless adults and the reform of the Medicaid program to expand the private insurance options available to beneficiaries;
- The integration of a **medical home concept** into all coverage options, including the Medicaid program;
- The development of a health insurance connector to link individuals with available insurance options;
- The **creation of the Louisiana Health Care Quality Forum** to develop standards and certification criteria for **medical home programs**, collect and **disseminate quality data**, and **serve an advisory function to the legislature** on quality/public reporting; and
- The use of **health information technology (IT)** to improve patient safety and create efficiencies throughout the redesigned health care system.

Based on these recommendations, and through the efforts of more than 40 health care and consumer groups, the State Legislature formally recognized the **Louisiana Health Care Quality Forum in 2007** via **Senate Concurrent Resolution 35** and **House Concurrent Resolution 75**. Established as a **private, not-for-profit organization**, the Quality Forum is led by a **volunteer Board of Directors*** and brings together people and organizations for the shared purpose of improving individual health and the overall health of Louisiana’s residents.

*See **Board Members**, page 13



“

Established as a private, not-for-profit organization, the Quality Forum is led by a volunteer Board of Directors and brings together people and organizations for the **SHARED PURPOSE OF IMPROVING INDIVIDUAL HEALTH AND THE OVERALL HEALTH OF LOUISIANA’S RESIDENTS.**

ORGANIZATIONAL FOCUSES

Since it was established, the Quality Forum has pursued an ambitious, quality-focused objective: reshaping health care in Louisiana so that it is truly patient-centered, technologically-advanced and value-driven. To achieve this, the organization serves as the **only neutral convener of stakeholders in the state** by collaborating with **providers, payers, purchasers and consumers** to reinforce and broaden the Quality Forum's mission and supporting Louisiana's health care agenda.

The Quality Forum's initial focus was on the transition to a **patient-centered model of care delivery** to improve quality and outcomes while reducing costs. Through the years, studies have demonstrated that the **medical home model** improves patient and population outcomes because it promotes primary care that is individualized, comprehensive, team-based, coordinated and accessible with an emphasis on quality and safety.

The focus also aligns with the **Triple Aim framework**, developed by the Institute of Healthcare Improvement and supported by the Centers for Medicare and Medicaid Services (CMS), as the health care industry shifts from a **volume-based to a value-based culture**. With the Triple Aim as its foundation, the organization continues working to:

- **Improve the health of the population;**
- **Enhance the experience and outcomes of the patient; and**
- **Reduce the per capita cost of care for the benefit of communities.**

The focus quickly expanded to include **clinical quality improvement measures** and **collection and analysis of trusted, actionable health care data**.

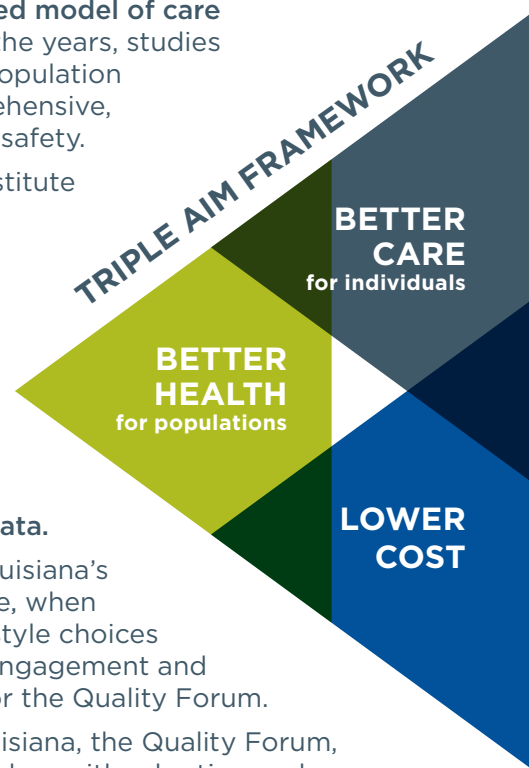
In addition, the Quality Forum recognized the importance of providing Louisiana's residents with information to improve decision-making at the point of care, when choosing a provider/health plan, when engaging in self-care and with lifestyle choices that may affect their health. **Outreach and education** to support patient engagement and empowerment was subsequently identified as another priority initiative for the Quality Forum.

With **health information technology (IT)** identified as a major need in Louisiana, the Quality Forum, with federal grant funding, set out to support the state's health care providers with adoption and implementation of electronic health records (EHRs) and to develop and implement a statewide health information exchange (HIE).

The Quality Forum adopted the **Louisiana Physician Orders for Scope of Treatment (LaPOST)** program as an initiative in 2010. LaPOST is an evidence-based model designed to improve end-of-life care for those with serious, advanced illnesses - the program's focus on quality made it a natural fit for the Quality Forum.

The organization has remained focused on developing and implementing a strong health IT infrastructure with innovative quality standards that are specific to the state and support the mission of LDH. As state and national reforms have occurred, this infrastructure has evolved to meet the changing needs of Louisiana's health care providers and patients, while **supporting the state's efforts to reduce costs, increase quality and improve outcomes**.

Today, the Quality Forum's major areas of focus yield a comprehensive and integrated approach to improving health care quality, value and outcomes in Louisiana.



HEALTH INFORMATION TECHNOLOGY (IT)

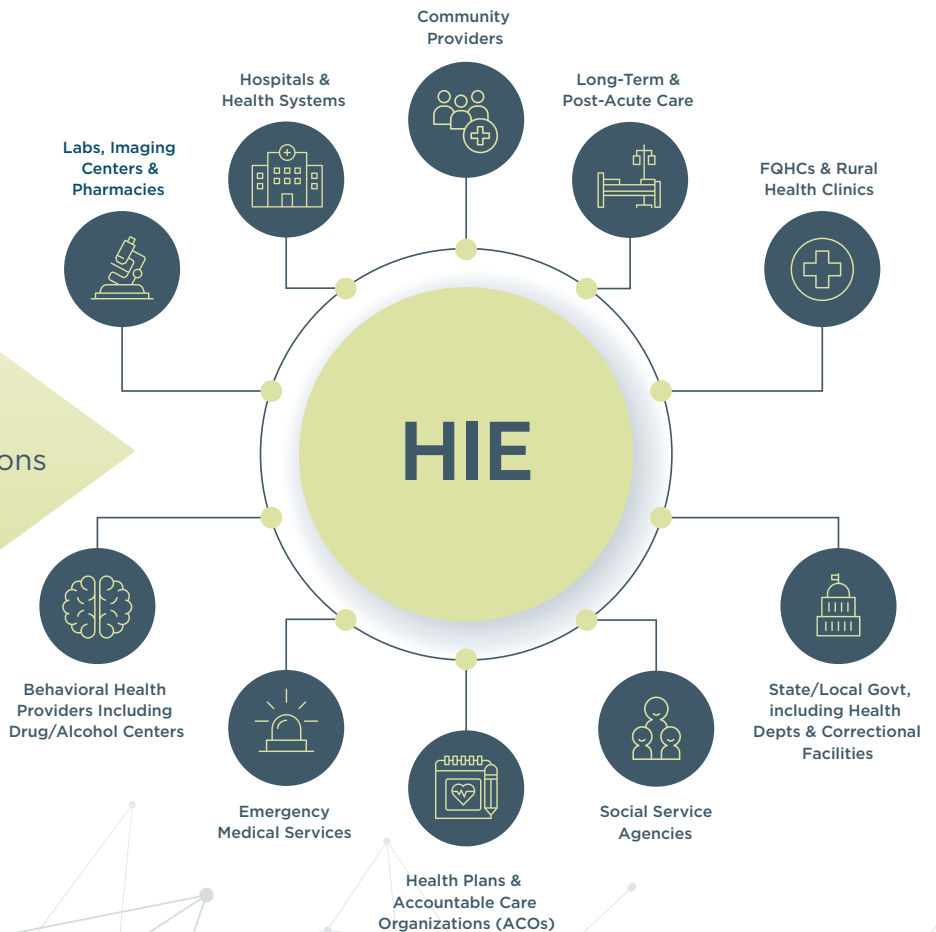
The Quality Forum has long recognized the foundational role of health IT in reshaping Louisiana’s health care system. As a result, the organization was **named as the state-designated entity by LDH** to lead the planning and implementation of health IT grants starting with funding made available by the American Recovery and Reinvestment Act (ARRA) of 2009. By supporting new models of care and payment, health IT aims to improve health and patient satisfaction while reducing the cost of care.

Louisiana Health Information Exchange (LaHIE)

LaHIE is a secure network that enables authorized health care providers and organizations to access and share health-related information from authorized locations across the state. Since launching in 2011, LaHIE has grown to include more than 522 signed providers, hospitals, health systems, clinics, home health agencies, school-based health centers (SBHCs), ambulance providers and other health care-related organizations and entities across the state, and has been **recognized nationally as one of the country’s more advanced HIEs**.* LaHIE not only offers two-way exchange of real-time patient data across systems and settings, it also enables health care organizations to leverage that data for improved quality and outcomes while reducing costs and maintaining competitiveness within their markets. In addition to the secure exchange of health information, LaHIE currently supports the following innovative programs:

- **Louisiana Emergency Department Information Exchange (LaEDIE)**. Supported by LaHIE, this service launched in 2015 and **supports LDH’s efforts to reduce costs and quality issues associated with non-emergent ED utilization among the state’s Medicaid patient population**. To address this issue, LDH convened a multi-stakeholder workgroup to identify best practices that address the use of EDs for primary care services. The workgroup recommended development of LaEDIE as an HIE application that receives and compiles ED utilization data from hospitals across the

POTENTIAL OPPORTUNITIES FOR HIES



“

LaHIE has grown to include more than 522 signed providers, hospitals, health systems, clinics, home health agencies, school-based health centers (SBHCs), ambulance providers and other health care-related organizations and entities across the state, and **HAS BEEN RECOGNIZED NATIONALLY AS ONE OF THE COUNTRY’S MORE ADVANCED HIEs.**

*See **Health IT Partners**, page 15

LaHIE/LaEDIE PARTICIPANTS

102 HOSPITALS	108 AFFILIATED CLINICS	140 OTHER CARE PROVIDERS/ FACILITIES	412K+ MONTHLY UNIQUE PATIENT VISITS - ADT
		3M+ MONTHLY LAB/RAD RESULTS ORU MESSAGES	11K+ MONTHLY VACCINATIONS FROM VXU MESSAGES

April 2021

state. LaEDIE provides the state's Healthy Louisiana Plans, which serve as Louisiana's Medicaid Managed Care Organizations (MCOs), with key data that enables them to conduct direct outreach, education and care management to drive their patients to primary care for non-emergent conditions. The **dual goals of LaEDIE** are to **reduce costs** associated with non-emergent ED utilization and to **improve outcomes** by enabling patients to schedule follow-up visits with primary care physicians. As of April 2021, of the **109 hospitals with EDs** in Louisiana, **96, or 88% have signed contracts** with LaEDIE. Of those with signed contracts, **91, or 95% are currently contributing data.**

- **Promote Interoperability/HIE Integration Assistance.** Louisiana Medicaid, in partnership with the Quality Forum, provides the HIE Integration Assistance Program to **increase provider participation and use of LaHIE services.** The program **provides assistance to** Medicaid hospitals, practices and other health care providers to help offset the initial cost associated with HIE integration.
- **Telehealth Integration and Innovation.** The Quality Forum has been a key partner for LDH in the exploration of **virtual health care delivery** opportunities with a focus on **improving access to quality care** for all Louisiana residents. The organization collaborated with the **Louisiana Rural Health Information Exchange (LARHIX).** LARHIX, an independent organization, that pioneered telehealth services in northern and central Louisiana, enabling rural patients to receive specialized care in their own communities. An organizational representative also chaired the **Louisiana Telehealth Access Task Force.** The Task Force is an advisory board to the State Legislature and LDH that **reports on the status of telehealth services** in the state. Additionally, the Quality Forum has partnered with the **Tex-La Telehealth Resource Center to advance the effective and efficient use of telehealth** in Louisiana and to **support access to telehealth resources** in rural and underserved communities to ensure access to quality care.
- **Disaster management.** Through LaHIE, the Quality Forum supports LDH's efforts to ensure the availability of critical patient data during times of disaster by **enabling the secure exchange and accessibility of data for evacuees in state-approved shelters.**

“

The dual goals of LaEDIE are to **REDUCE COSTS** associated with non-emergent ED utilization and to **IMPROVE OUTCOMES** by enabling patients to schedule follow-up visits with primary care physicians.

Electronic Health Record (EHR) Implementation/Promoting Interoperability

Since 2010, the Quality Forum has helped more than 2,000 health care providers and hospitals in the state to adopt, implement and meaningfully use EHRs. With this support, eligible providers and hospitals in Louisiana have received more than \$119 million in Medicare/Medicaid EHR incentive payments to date. The organization's services have evolved to include support for LaHIE integration, patient-centric care model transformation and provider education and outreach.

- Louisiana Department of Public Safety and Corrections (DPS&C).** Throughout 2017, the Quality Forum worked closely with the DPS&C to begin implementation and integration of a certified EHR system for the department's headquarters, eight state correctional facilities and more than 30 eligible providers. Once implemented, this system will enhance the department's ability to monitor and improve the health of nearly 17,000 offenders. Quality Forum staff also provided practice transformation, health IT consulting, training and project management services. This collaboration began in 2016 when the organization partnered with DPS&C to assess, select and contract with a certified EHR system vendor.
- Louisiana Department of Health – Office of Public Health (OPH).** In the spring of 2017, OPH chose to extend its service agreement with the Quality Forum. The agreement provided a certified EHR system and included ongoing integration and technical support for use at all parish health units. The EHR system, which services 64 parish health units across the state, was selected and implemented by the Quality Forum in 2015. It was designed to optimize the units' use of EHR technology to improve care coordination, care quality and cost reductions for more than 209,000 Louisiana residents each year. In addition, the system also enhances OPH's ability to generate revenue that may be used to provide key health care services. In 2020, the Quality Forum began **supporting OPH with public COVID-19 response** by utilizing our Enterprise Master Patient Index to **support contact tracing efforts and remove duplicate information from the system.**
- Medicaid Provider Outreach.** In partnership with LDH's Office of Medicaid and with support from the Centers for Medicare and Medicaid Services, the Quality Forum continued to assist eligible providers with the adoption and continued utilization of certified health IT across the state's health care settings. Since the Office of the National Coordinator for Health Information Technology's Regional Extension Centers program ended in 2016, the Quality Forum has provided consulting support to providers to continue their participation and promote interoperability.

“

IN 2020, THE QUALITY FORUM BEGAN SUPPORTING OPH WITH PUBLIC COVID-19 RESPONSE by utilizing our Enterprise Master Patient Index to support contact tracing efforts and remove duplicate information from the system.



PRACTICE TRANSFORMATION / PATIENT-CENTERED MEDICAL HOME (PCMH) DEVELOPMENT

Since it was established, the Quality Forum has been committed to promoting the adoption of patient-centric care among Louisiana's health care providers. Quality Forum coaches work closely with physician practices and/or groups to provide assessments; on-site and virtual training; practice and workflow design; project management; education/outreach; and PCMH application assistance. To date, sixty-three practices have received formal PCMH recognition and three groups have achieved Patient-Centered Specialty Practice recognition (obstetrics/gynecology and endocrinology) from the National Committee for Quality Assurance. As a result, the organization has assisted 51 percent of the PCMH-recognized practices in Louisiana. With the Quality Forum's integrated program structure, the coaches also offer health IT related services to augment the practices' EHR utilization and HIE connectivity.

QUALITY IMPROVEMENT AND ANALYTICS

The Quality Forum's organizational framework is founded in the development and implementation of quality improvement and analytics programs. Accordingly, these programs are designed to impact stakeholder groups by providing an aggregate view of population health outcomes and using the results to guide quality improvement in Louisiana's health care. As the organization's reach and focuses have expanded, the capabilities have overlapped and combined to **support health IT adoption, interoperability and quality reporting** for the **capture and measurement of patient outcomes; reductions in non-emergent utilization of EDs** (e.g. LaEDIE); **practice transformation;** and **improved decision-making** at the point of care. With this integrated approach to quality improvement and analytics, the Quality Forum continues to transform health care through transparency and collaboration with provider and payer stakeholders.

- **Healthy Baton Rouge Initiative.** In 2013, the Quality Forum partnered with multiple community organizations, health care providers and hospitals to launch a pilot program focused on improving health outcomes in the Greater Baton Rouge area. The Quality Forum developed and implemented an ED utilization program to help identify high volume diagnoses and potentially preventable ED visits. The resulting data enabled community leaders to develop quality programs and measures at the community level to establish appropriate care management resources.
- **Louisiana Emergency Department Information Exchange (LaEDIE).** As noted on p.6, LaEDIE launched in 2015 as an HIE application to receive utilization data from participating hospital EDs in Louisiana. LaEDIE compiles the data and reports it on a nightly basis to the appropriate Healthy Louisiana MCO. The MCOs, in turn, use the information to conduct appropriate outreach, education and follow-up with their patients. LaEDIE's dual goals are to improve outcomes by enabling patients to schedule follow-up visits with primary care providers and to reduce costs associated with non-emergent ED utilization. A **pilot project with one of the MCOs** utilizing LaEDIE data resulted in a **21 to 29 percent reduction in inpatient admissions** per 1,000 patients and a **10 to 18 percent reduction in ED visits** per 1,000 members within their top performing pediatrics practices. Louisiana Medicaid has also reported an **overall decrease in inappropriate ED utilization** since the launch.

21-29%
**REDUCTION IN
INPATIENT ADMISSIONS**
per 1,000 patients

10-18%
**REDUCTION IN
ED VISITS**
per 1,000 members

LOUISIANA PHYSICIAN ORDERS FOR SCOPE OF TREATMENT (LaPOST)

The Quality Forum continued its mission to educate and inform health care professionals and consumers in Louisiana about advance care planning and the LaPOST document. Intended for individuals with serious, advanced illnesses, LaPOST enables them to communicate and record end-of-life care wishes with a medical order that travels across health care settings.

The initiative expanded its statewide reach in 2017 by utilizing a variety of methods: on-site educational seminars/meetings; webinars; educational training videos; supporting materials and resources; a comprehensive website (la-post.org); and social/media relations. Key highlights included:

- **Advance Care Planning/LaPOST Education For Long-Term Care Facilities.** With a third year of grant funding from LDH using civil money penalties paid into the Nursing Home Residents' Trust Fund, the organization made great strides to further promote program implementation into existing operations. Educational tools developed included two DVDs that focus on the use of LaPOST. One is designed especially for long-term care professionals, and the other is intended for viewing by residents and/or family members and caregivers. Susan Nelson, MD, LaPOST Coalition Chair, hosts the programs, using a format that features interviews with long-term care professionals. The videos provide each audience with a streamlined approach to understanding LaPOST. The videos are available for viewing via DVD and online in the eLearning section of la-post.org. In the fourth year of grant funding team members educated long-term care facilities on the LaPOST Registry. The Quality Forum hosted four webinars for more than 150 professionals on the objectives and benefits of the LaPOST Registry, and developed education tools which included: fact sheets, tip sheets, training manuals, presentations and user manuals.
- **National Healthcare Decisions Day (NHDD).** The LaPOST initiative participates in NHDD on April 16 by partnering with local, state and national health care organizations to raise awareness about advance care planning. The integrated marketing strategy includes written educational materials for health care organizations, as well as recognition from the governor and local officials in Baton Rouge, Monroe and Lafayette with official proclamations in support of NHDD.
- **LaPOST Registry.** In 2019, the Quality Forum partnered with Vynca to allow health care providers across multiple care delivery continuums in Louisiana to electronically complete, store and access patients' end-of-life wishes. This collaboration will help enhance the state's current advance care planning (ACP) program, which includes the LaPOST form. In 2020, all Ochsner facilities across the state began using the LaPOST Registry.

KEY BENEFITS OF THE LaPOST REGISTRY:

- Offers a web-based means for health care providers to electronically complete & submit a legally valid LaPOST form & other ACP documents using a simple, intuitive user interface to a centralized registry
- Creates a sustainable, statewide LaPOST registry network
- Increases accessibility to LaPOST & ACP documents
- Ensures accurate LaPOST completion
- Renders an electronic, printable PDF of the LaPOST form



OUTREACH AND EDUCATION

As part of its ongoing commitment to educate providers, payers, purchasers and consumers about key issues related to health care improvement, the Quality Forum has regularly sponsored **informational summits**. Through the years, these events have addressed **important and timely topics** and have drawn hundreds of participants.

- Patient-Centered Medical Homes
- Health Information Technology and Exchange
- Health Care Payment Reform
- Better Ways to Pay for Health Care - From Volume to Value
- Improving Health Care Through Partnerships in Quality Measurement and Public Reporting

The Quality Forum also conducts and participates in **hundreds of speaking engagements, exhibits, community-level events, on-site and virtual educational sessions** and related activities each year to ensure that Louisiana's **health care providers and consumers** are armed with the knowledge, tools and resources necessary to drive improvements in care delivery and outcomes.

- **Health IT Advisory Council.** The organization has administered the legislature-supported Health IT Advisory Council, a committee comprised of health care providers, payers and purchasers that provides feedback to the state about health IT advancements and policies, payment reform, interoperability, data sharing and other key issues.
- **Health Care Consumer Advisory Council.** To serve as the voice of Louisiana's health care consumers in the development of strategies to educate and empower patients and families regarding health IT, the Quality Forum facilitated a Health Care Consumer Advisory Council. This group included **representatives of consumer-facing organizations across the state** such as AARP, the National Alliance on Mental Health, the American Diabetes Association and the American Heart Association, among others.
- **Statewide Patient Engagement Campaign.** "Your Health In Your Hands," a joint effort of the Quality Forum and LDH, launched in August 2015, with the debut of a new, consumer-friendly website. The campaign positioned Louisiana as **one of the first states in the nation to conduct a statewide, direct-to-consumer, health IT education campaign**. It was designed to promote the use of health IT by Louisiana's patients and families for improved decision-making, better outcomes and greater patient experience, while also providing education regarding patient rights, including how to get and use copies of personal health information. Using an integrated marketing, communications and outreach strategy, combined with unique partnerships involving consumer-facing organizations across the state, the campaign touched hundreds of thousands of Louisiana residents, and garnered the support of providers, payers and purchasers as a key tool in driving consumer demand for health IT innovation.
- **Health IT Promotion.** The Quality Forum conducts outreach and education activities for providers to promote awareness of the Medicaid EHR Incentive Program, the statewide HIE, interoperability and the Medicaid Specialist Outreach initiative.



ORGANIZATIONAL RELATIONSHIPS

Since it was established, the Quality Forum has worked diligently to establish and maintain relationships with key organizations that represent stakeholder groups on national, regional, state and local levels.

NATIONAL

eHealth Initiative (eHI)
 Coalition to Transform Advanced Care (C-TAC)
 Healthcare Information and Management Systems Society (HIMSS)
 Milbank Memorial Fund
 National Committee for Quality Assurance
 National POLST
 Network for Regional Healthcare Improvement (NRHI)
 Strategic Health Information Exchange Collaborative (SHIEC)

REGIONAL

ALS Association Louisiana-Mississippi Chapter
 American Cancer Society-Mid-South Division
 Gulf Coast Chapters/Healthcare Information and Management Systems Society
 Louisiana and Mississippi Association of Homes and Services for the Aging
 Louisiana-Mississippi Hospice & Palliative Care Organization
 Texas/Louisiana Telehealth Resource Center

STATE

AARP Louisiana
 Betty and Leonard Phillips Deaf Action Center
 Capital Area Human Services District
 Children's Coalition of Northeast Louisiana
 Community Healthcare Education Network
 eQHealth Solutions
 Homecare Association of Louisiana
 Louisiana Academy of Family Physicians
 Louisiana-American Diabetes Association
 Louisiana Assistive Technology Access Network

Louisiana Association of Business and Industry
 Louisiana Association of Health Plans
 Louisiana Board of Examiners of Nursing Facility Administrators (LABENFA)
 Louisiana Board of Medical Examiners
 Louisiana Business Group on Health
 Louisiana Chapter-American Academy of Pediatrics
 Louisiana Chapter-Healthcare Information Management Systems Society
 Louisiana Chapter-National Association of Social Workers

Louisiana Department of Health

- Bureau of Emergency Medical Services
- Louisiana Medicaid
- Office for Citizens with Developmental Disabilities
- Office of Aging and Adult Services
- Office of Behavioral Health
- Office of Long-Term Care
- Office of Public Health

Louisiana Department of Public Safety and Corrections
 Louisiana Health Information Management Association

Louisiana Hospital Association
 Louisiana Lifespan Respite Coalition
 Louisiana Men's Health Organization
 Louisiana Nursing Home Association
 Louisiana Primary Care Association
 Louisiana Public Health Institute
 Louisiana Rural Health Association
 Louisiana Rural Health Information Exchange
 Louisiana State Coroners Association
 Louisiana State Medical Society
 Louisiana State Nursing Association
 Louisiana Telehealth Access Task Force
 Louisiana Workforce Commission
 Palliative Care Institute of Southeast Louisiana
 Southwest Louisiana Chapter-National Alliance on Mental Illness

LOCAL

Baton Rouge Chapter-America Heart Association
 Baton Rouge Area Foundation
 Cancer Association of Greater New Orleans
 C.B. and Irene Pennington Family Foundation
 Families Helping Families of Greater Baton Rouge
 St. Thomas Community Health Center
 The Rapides Foundation

BOARD MEMBERS

A.A. "Chard" Richard III (President)
Executive Vice President & Managing Director
Alliant Employee Benefits

Ruth Kennedy (Secretary/Treasurer)
Health Policy Director
Southern Strategy Group Louisiana

**Michael O. Fleming, MD, FAAFP
(Immediate Past President)**
Retired

**Daniel Burke, SPHR
(Member at Large)**
Director of Corporate Benefits
Turner Industries

Charles Burnell, MD
Chief Medical Officer
Acadian Companies

John F. George, Jr., MD
President & Chief Executive Officer
Biomedical Research Foundation (BRF)

Wes Hataway, JD
Legal & Policy Director
Louisiana Nursing Home Association

Tom Sawyer
Founder
Sawyer and Associates

Cheryl Tolbert
President & Chief Executive Officer
Louisiana Business Group on Health

FORMER BOARD MEMBERS

Gery Barry, MS, FSA
President & CEO
Barry-Global Strategic Services

Joseph Bisordi, MD, FACP
*Former Executive Vice President &
Chief Medical Officer*
Ochsner Health System

Yakima Black, MS
President & CEO, LATAN
FQHC Consultant
Adjunct Instructor, Southern University

Kathleen Babineaux Blanco (deceased)
Former Governor
State of Louisiana

William Borne, RN (deceased)
Chairman Emeritus, Amedisys, Inc
Principal/Founder, Borne Capital Management

Harold Brandt, MD, FACP
*Former Medical Director &
Chief Compliance Officer*
The Baton Rouge Clinic

Patrick Breaux, MD, FACC, FACP
Medical Director of Cardiology
Ochsner Medical Center

Lynn Buggage, MSHA
Former State Health Systems Director
American Cancer Society

L. Philip Caillouet, PhD
Founding Director
Louisiana Center for Health Information

Claudia Campbell, PhD
Professor Emeritus
Tulane University, SPHTM

David M. Carmouche, MD
*Executive Vice President,
Value-Based Care & Network Operations*
Ochsner Health
President
Ochsner Health Network

John E. Carroll C(k)P, ARPC, CRPC, AAMS
Chief Executive Officer, Wealth Advisor
Wellspring Advisor Group

Frederick Cerise, MD, MPH
President & Chief Executive Officer
Parkland Memorial Hospital

Karen DeSalvo, MD, MPH, MSc
Chief Health Officer
Google

Jeff Drozda
Chief Executive Officer
Louisiana Association of Health Plans

BOARD MEMBERS *CONTINUED*

Catherine Fairchild, JD

Attorney
Louisiana Office of Community Development

Teri G. Fontenot, FACHE

Retired
Woman's Hospital

Donna D. Fraiche

Strategic Consultant
Fraiche Strategies

Linda Gage-White, MD, PhD, MBA

Past President
Louisiana Board of Medical Examiners

Glen J. Golemi

Chief Executive Officer
eQ Health Solutions

Sabrina Heltz, ASA, MAAA

Former Chief Operating Officer
Ochsner Health Network

Sandra Kemmerly, MD, MACP, FIDSA

System Medical Director, Hospital Quality
Ochsner Health System

Anjum Khurshid, PhD, MB BS (MD), MPAff

Director, Data Integration
Co-Chief, Health Informatics
Assistant Professor, Population Health
Dell Medical School at the University of Texas at Austin

Frannie Kronenberg, MD, MSc

Medical Director, Population Health
Mass General Brigham

Lemar F. Marshall

Chief Operating Officer
North Oaks Obstetrics & Gynecology
City Councilman
City of Hammond

Nancy McPherson, MPA, SPHR

State Director
AARP California

Stephanie Mills, MD, MHCM

Chief Medical Officer
BlueCross BlueShield of Louisiana

Louis Minsky, MD

Private Practitioner
Minsky & Carver Medical Center for Wellness

Susan E. Nelson, MD, FACP, FAAHPM

Medical Director of Post-Acute Care
Ochsner Health Network
Palliative Medicine Physician
Ochsner Health System

Sonya Nelson

Former President & CEO
Anthem/Amerigroup Louisiana

Ray Peters, SPHR

Principle Consultant
Peters Consulting
MBA Director & Leadership Instructor
Nichols State University

Paul Salles

President & Chief Executive Officer
Louisiana Hospital Association

Eric Taylor, MS (deceased)

Former Chief Executive Officer
Southwest Louisiana Center for Health Services

Dionne Viator, CPA, FACHE

President & CEO
Iberia Medical Center

Vindell Washington, MD, MHCM, FACEP

Chief Clinical Officer
Verily Life Sciences

Leonard Weather, Jr., R. Ph, MD

Director
Omni Fertility and Laser Institute

Willie White III, MPH

Chief Executive Officer
David Raines Community Health Centers

Stephen Wright

Former Senior Vice President of Group Operations
CHRISTUS Health Louisiana

Former board president

HEALTH IT PARTNERS

To date, the following health care providers have signed participation agreements with the Louisiana Health Care Quality Forum.

AAA Home Health, Inc. in New Iberia
Abbeville General Hospital in Abbeville

- AGH Behavioral Medicine Center in Abbeville
- AGH Clinic in Abbeville
- Maurice Community Care Clinic in Maurice

Abrom Kaplan Memorial Hospital in Kaplan

- Primary Care Clinic of Kaplan in Kaplan

Acadia St. Landry Hospital in Church Point
Acadian Companies in Lafayette
Acadian ENT in Lafayette
Acadian HomeCare / Abbeville
Acadian HomeCare / Acadia Parish
Acadian HomeCare of New Iberia, LLC
Acadian HomeCare, LLC
Acadian Hospice
Acadian Hospice
Acadian Palliative Care
Access Health Louisiana School-Based Health Center in St. Rose
Acclivity Health Solutions
Advanced Southern Surgical Associates, LLC in Thibodaux
Aetna Better Health, Inc.
Affinity Health Group

- Affinity Clinic at Oliver Rd.
- Affinity Ear Nose & Throat
- Affinity Family Practice & Wound Care
- Affinity Industrial Medicine
- Affinity Orthopedic Clinic
- Affinity Orthopedic Office
- Affinity Pediatrics Clinic
- Affinity Population Health
- Affinity Urology Clinic
- Affinity Urology Clinic 2
- Aledade
- Internal Medicine Clinic
- The Medical Office at Mangham
- Oliver Rd. Orthopedic Clinic
- Oliver Rd. Family Practice
- Pediatrics Plus
- Sampognaro Cardiovascular Clinic
- Sampognaro Internal Medicine Clinic
- The Heart Clinic
- The Medical Office North
- The Medical Office
- The Urology Clinic
- University of Louisiana at Monroe Clinic
- Affinity Central Lab

- Affinity Central Lab
- Affinity Specialty Lab
- MSH Imaging
- HMC Affinity Health Management Center
- Affinity Children & Family Walk-In Clinic
- Affinity Walk-In Clinic

Alexandria Gastroenterology Associates in Alexandria
Alexandria Gastrointestinal Specialists, LLC in Alexandria
Alexandria Neurosurgical Clinic in Alexandria
Allen Parish Hospital in Kinder

- APH Acute Facility
- APH Home Health
- APH Psychiatric
- APH Regional Health Center
- APH Skilled Nursing

Allen Parish School Board School-Based Health Center (2 sites) in Oakdale
All Saints Hospice
Americare Family Hospice
American Legion Hospital in Crowley

- Pauline Faulk Center for Behavioral Health in Rayne

Amerigroup
AmeriHealth Caritas Louisiana, Inc.
AMG Specialty Hospital-Lafayette in Lafayette
Anvoi Health
The Arthritis and Diabetes Clinic in Monroe
Ascend Hospice Care
Avoyelles Hospital in Marksville
Avoyelles Surgical Associates in Marksville
Baton Rouge General Home Health
Baton Rouge General Medical Center
Beauregard Memorial Hospital Home Health Agency
Beauregard Memorial Hospital in DeRidder
Bellator Healthcare Management, LLC
Belle View Living Center
Better Care Home Health in Alexandria
Bienville Medical Center in Arcadia
Bogalusa High School Health Clinic in Bogalusa
Bossier Family Medicine in Bossier City
Bossier Maximum Security Facility in Plain Dealing
Bridgeway Hospice of Acadiana
Brighton Bridge Hospice, LLC
Bunkie General Hospital in Bunkie

- BGH Rural Health Clinic in Bunkie
- The Family Care Clinic in Bunkie

HEALTH IT PARTNERS *CONTINUED*

Bunkie HomeCare
 Caddo Parish Fire District #4 in Keithville
 Caldwell Memorial Hospital in Columbia
 Cardiovascular Institute of the South (12 sites) throughout South Louisiana
 Carpenter Health Network
 The Carpenter Hospice of Northwest Louisiana, LLC
 Catahoula Parish Hospital Service District #2 in Sicily Island
 CENLA Palliative Care
 Center for Pediatric and Adolescent Medicine (3 sites) in Thibodaux and Houma
 Central Louisiana Surgical Hospital in Alexandria
 CHRISTUS Coushatta Health Care Center in Coushatta
 CHRISTUS Coushatta Ringgold Rural Health Clinic in Ringgold
 CHRISTUS Homecare Schumpert
 CHRISTUS Homecare St. Patrick
 CHRISTUS Hospice & Palliative Care Schumpert
 CHRISTUS Hospice & Palliative Care St. Frances Cabrini
 CHRISTUS Hospice & Palliative Care-Schumpert
 CHRISTUS Hospice & Palliative Care-St Francis Cabrini
 CHRISTUS Hospice and Palliative Care St. Patrick
 CHRISTUS Hospice-St. Patricks
 CHRISTUS St. Francis Cabrini Hospital in Alexandria

- CHRISTUS St. Francis Cabrini Hospital School-Based Health Center (17 sites) located throughout Central Louisiana

 CHRISTUS St. Patrick Hospital in Lake Charles

- CHRISTUS St. Patrick Hospital School-Based Health Center (5 sites) in Lake Charles

 City of Shreveport EMS in Shreveport
 Clarity Hospice
 Crossroads Hospice
 Cypress Clinic
 CHRISTUS Schumpert Medical Center in Shreveport

- CHRISTUS Health Shreveport-Bossier School-Based Health Center (3 sites) in Shreveport

 CHRISTUS Schumpert Highland Hospital in Shreveport
 CHRISTUS Schumpert St. Mary Place in Shreveport
 Clarity Health Services SC, LLC
 Compassionate Care Hospice
 Comprehensive Medical Clinic in Lake Charles
 Cortex Health, Inc.
 Citizens Medical Center in Columbia
 Cypress Pointe Hospital East in Slidell
 Cypress Pointe Surgical Hospital in Hammond
 Delhi HomeCare

Desoto Regional Health System in Mansfield

- Desoto Regional Family Medicine – Logansport
- Desoto Regional Family Medicine – Mansfield
- Zwolle Rural Health Clinic in Zwolle

 Doctors Hospital at Deer Creek in Leesville
 East Carroll Parish Hospital in Lake Providence

- Family Medical Clinic in Lake Providence
- Family Practice Clinic in Lake Providence

 Egan - Ochsner Home Health Franklinton
 Egan - Ochsner Home Health New Orleans
 Egan - Ochsner Home Health Northshore
 Egan - Ochsner Home Health River Parishes
 Egan Hospice
 Eunice Community Home Health
 Fairway Medical Surgical Hospital in Covington
 Family Care Center of Southwest Louisiana in Westlake
 The Family Doctors of Natchitoches
 Family Medicine - James D. Wallace, MD in Pineville
 Family Medicine Clinic in New Iberia
 Feliciana Home Health
 Feliciana Home Health South
 Feliciana Home Health West
 Franklin Foundation Hospital in Franklin

- Baldwin Family Care Center in Baldwin
- Franklin Family Care in Franklin
- Franklin Orthopedics in Franklin
- Franklin Women's Health in Franklin

 Franklin HomeCare
 Franklin Medical Center in Winnsboro

- Crowville Health Center in Winnsboro
- FMC Rural Health Clinic in Newellton
- FMC Rural Health Clinic in St. Joseph
- FMC Rural Health Clinic in Winnsboro
- Franklin Medical Center SWB in Winnsboro
- Hospital Psychiatric Unit in Winnsboro
- Medical Staff of FMC in Winnsboro

 Glenwood Home Health Services
 Goodwood Primary Care Clinic in Baton Rouge
 Grace Hospice of New Orleans, LLC
 Guardian Hospice Care
 Heart of Hospice – Acadiana
 Heart of Hospice – Baton Rouge
 Heart of Hospice – Central
 Heart of Hospice – Franklin
 Heart of Hospice – Lake Charles
 Heart of Hospice – Monroe
 Heart of Hospice – New Orleans
 Heart of Hospice – Northshore
 Heart of Hospice – Shreveport

Hardtner Medical Center in Olla

- Hardtner Medical Clinic in Olla
- Hardtner Family Clinic in Olla

Health Care Centers in Schools (8 sites) in Baton Rouge

Homedica House Calls in Baton Rouge

Homer Memorial Hospital in Homer

- Homer Memorial Hospital - Claiborne Home Health
- Homer Memorial Hospital Senior Care Center in Homer

Hood Memorial Hospital in Amite

- Amite Walk-In Clinic in Amite
- Hood Memorial Hospital (ER Physicians) in Amite
- Hood Memorial Hospital (Swing) in Amite

Hospice Care of Louisiana, LLC

Hospice of Acadiana

The Hospice of Baton Rouge

Iberia Gastroenterology Associates in New Iberia

Iberia Hope Healthcare Hospice

- Medical Center in New Iberia

Innis Community Health Center in Innis

Innovative Home Health Group, LLC

Internal Medicine, LLC in Jennings

Jackson Parish Hospital in Jonesboro

- Chatham Medical Clinic in Chatham
- Jackson Parish Hospital Family Care Clinic in Jonesboro
- Jackson Parish Hospital School-Based Health Center in Jonesboro
- Jonesboro Family Care Clinic in Jonesboro

Jeff Davis Family Medicine in Jennings

Jeff Davis MD Homecare

Jefferson Parish School Board School-Based Health Centers (4 sites) in Marrero

Jennings American Legion Hospital in Jennings

Kaplan HomeCare

Kindred Health Care (17 sites) throughout Louisiana

Lacomb Family Medicine in Jennings

Lady of the Sea General Hospital in Cut Off

- Lady of the Sea General Hospital Dialysis Clinic in Cut Off
- Lady of the Sea General Hospital Home Health in Cut Off
- Lady of the Sea General Surgery in Cut Off
- Lady of the Sea Medical Clinic in Cut Off
- Lady of the Sea Medical Clinic in Golden Meadow
- Lady of the Sea Medical Clinic in Larose
- Lady of the Sea Urology Clinic in Cut Off

Lafayette General Medical Center in Lafayette

Lafayette General Surgical Hospital in Lafayette

Lafayette Parish School System - School-Based Health Center in Carencro

Lahasky Medical Clinic in Abbeville

Lake Arthur Health Clinic in Lake Arthur

Lakeshore Home Health Care, LLC

Lane Regional Medical Center in Zachary

- FASTLane in Zachary
- Lane Family Practice & Sports Medicine in Zachary
- Lane Surgery Group in Zachary
- Zachary Family Practice in Zachary

Lakeside Hospice

Life Path Hospice

Life Source Services, LLC

LifePoint Hospitals

- Acadian Medical Center in Eunice
- Mercy Regional Medical Center in Ville Platte
- Minden Medical Center in Minden
- Teche Regional Medical Center in Morgan City

Life Sources Services, LLC

Louisiana Department of Public Safety & Corrections

- Allen
- BB Rayburn
- David Wade
- Dixon
- Hunt
- LCIW Women - HUNT
- LSP Angola
- Raymond Laborde
- LCIW - Jeston

Louisiana Healthcare Connections

Louisiana Home Health

Louisiana HomeCare

- Louisiana HomeCare of Shreveport
- Louisiana HomeCare of Springhill
- Louisiana HomeCare of Zwolle
- Louisiana HomeCare of Alexandria
- Louisiana HomeCare of Miss-Lou, LLC

Louisiana Hospice & Palliative Care of New Orleans

Louisiana Hospice & Palliative Care of Baton Rouge

Louisiana Hospice & Palliative Care of Jennings

Louisiana Hospice & Palliative Care of Monroe

Louisiana Hospice & Palliative Care of Opelousas

Louisiana Hospice and Palliative Care

Lourdes Home Health

Lourdes Hospice

LSU Department of Pediatrics School-Based Health Center (3 sites) in New Orleans

Madison Parish Hospital in Tallulah

HEALTH IT PARTNERS *CONTINUED*

Madison Parish School District School-Based Health Center in Tallulah

Medistar Home Health of Alexandria

Medistar Home Health of Bastrop

Medistar Home Health of Baton Rouge

Medistar Home Health of Jackson Parish

Medistar Home Health of Marksville

Medistar Home Health of Monroe

Medistar Home Health of Natchitoches

Medistar Home Health of Shreveport-Bossier

Methodist Health System Foundation, Inc. in Slidell

Monroe Surgical Hospital in Monroe

Morehouse Community Medical Centers, Inc. in Bastrop

Morehouse General Hospital in Bastrop

- MGH Physicians Clinic in Bastrop

- MGH Rural Health Clinic in Bastrop

Natchitoches Regional Medical Center in Natchitoches

New Iberia Manor North in New Iberia

NOLA SJH II, LLC

Northwest Louisiana Human Services District in Alexandria

Nursing Care

Oakdale Community Hospital in Oakdale

- Elizabeth Family Health Center in Elizabeth

- Forest Hill Family Health Center in Forest Hill

- Opelousas General Health System in Opelousas

Ochsner Baptist Medical Center

Ochsner Home Health of Baton Rouge

Ochsner Home Health of Covington

Ochsner Home Health of New Orleans

Ochsner Home Health of Raceland

Ochsner Medical Center – Baton Rouge

Ochsner Medical Center – Kenner

Ochsner Medical Center – Marrero

Ochsner Medical Center – New Orleans

Ochsner Medical Center – North Shore

Ochsner Medical Center – River Parishes

Ochsner Medical Center – St. Anne

Ochsner Medical Center – St. Bernard

Ochsner Medical Center – West Bank

Ochsner Medical Complex – Iberville

Ouachita Parish School-Based Health Clinic (2 sites) in West Monroe

Our Lady of Lourdes RMC School-Based Health Clinic in Lafayette

Outpatient Medical Center in Leesville

Outpatient Medical Center in Natchitoches

Outpatient Medical Centers in Tallulah

P&S Surgical Hospital in Monroe

Palliative Care of New Orleans

Palliative Medicine of Acadiana

The Pediatric Center of Southwest Louisiana in Lake Charles

The Pediatric Center of Southwest Louisiana in Sulphur

Physicians Clinic of Sterlington

Pointe Coupee General Hospital in New Roads

Pointe Coupee Hospice

Post Acute Medical Specialty Hospital of Lafayette

Prevost Memorial Hospital in Donaldsonville

Primary Care Providers For a Healthy Feliciana (2 sites) in Clinton

Reeves Memorial Medical Center in Bernice

Richardson Medical Center in Rayville

- NELHC in Rayville

- RMC Surgery Clinic in Rayville

- Richardson Medical Center School-Based Health Center in Rayville

Richland Parish Hospital-Delhi in Delhi

- Delhi Community Health Center in Delhi

- Delhi Rural Health Clinic in Delhi

- Richland Parish Hospital School-Based Health Center in Delhi

Riverside Medical Center in Franklinton

- Franklinton Rural Health Clinic in Franklinton

- Riverside Pediatrics & Internal Medicine Clinic in Franklinton

River Palms Nursing & Rehab

Rayne Medicine Shoppe Inc.

Riverland Medical Center

Sabine Medical Center in Many

- Sabine Medical Center Professionals in Many

- Sabine Medical Center Rural Health Center in Many

- Sabine Medical Center Rural Health Center in Zwolle

Savoy Medical Center in Mamou

- Elton Rural Health Clinic in Elton

- Mamou Family Care in Mamou

- Savoy Family Care in Eunice

School-Based Health System (3 sites) in Central

Scott Family Physicians – Darrin Menard, MD in Lafayette

Scott Family Physicians – Geoffrey Mire, MD in Lafayette

Serenity Homecare

SMH-Ochsner Home Health of Slidell

Southeast Community Health Systems, Inc.

Southeast Neuroscience Center in Houma

Southern Home Health

Springhill Medical Center in Springhill

- North Webster Medical Clinic in Sarepta

- SMC/Doctors Clinic in Springhill

St. Charles Parish Hospital in Luling
 St. Francis Medical Center Home Health
 St. Francis Medical Center School-Based Health System in Monroe
 St. Helena Parish Hospital in Greensburg
 St. James Parish Hospital in Litcher
 St. James Primary Care in Gramercy
 St. Joseph Hospice & Palliative Care Northshore, LLC
 St. Joseph Hospice & Palliative Care of Monroe, LLC
 St. Joseph Hospice of Acadiana, LLC
 St. Joseph Hospice of Bayou Region, LLC
 St. Joseph Hospice of Cenla, LLC
 St. Joseph Hospice of Southwest Louisiana, LLC
 St. Joseph Hospice, LLC
 St. Landry HomeCare
 St. Martin Hospital in Breaux Bridge
 St. Martin Parish School Board School-Based Health System (3 sites) in Breaux Bridge
 Start Community Clinic in Rayville
 Stat Home Health North, LLC
 Stat Home Health of Northwest Louisiana, LLC
 Stat Home Health Southeast Louisiana, LLC
 Stat Home Health Southwest Louisiana, LLC
 Stat Home Health, LLC
 Teche Action Board School-Based Health Clinic in Franklin
 Thibodaux Regional Medical Center in Thibodaux

- Cardiovascular Clinic of Thibodaux Regional Medical Center
- Family Medical Clinic of Thibodaux Regional Medical Center
- Internal Medicine Clinic of Thibodaux Regional Medical Center
- Neurosurgery Clinic of Thibodaux Regional Medical Center
- Rheumatology Clinic of Thibodaux Regional Medical Center

Tony Leung, MD in Lake Charles
 United Health Care Community Plan
 Union General Hospital in Farmerville

- Union Clinic of Marion in Marion
- Union General Rural Health Clinic in Farmerville

 University Health System in Shreveport

- University Health Conway in Monroe

 Vantage Health Plan
 Ville Platte Home Health Agency
 Warm Springs Rehabilitation Hospital of Allen, TX
 WestCare Care Center
 West Carroll Memorial Hospital in Oak Grove

- Community Medical Clinic in Oak Grove
- Eudora Medical Clinic in Eudora, Ark.
- Lake Providence Medical Center in Lake Providence
- Oak Grove Medical Clinic in Oak Grove
- West Carroll Home Health in Oak Grove
- West Carroll Medical Clinic in Oak Grove

 West Carroll Parish Ambulance Service District in Oak Grove
 West Feliciana Parish Hospital in St. Francisville

- West Feliciana Parish Hospital Physicians Clinic in St. Francisville

 West Feliciana Parish Schools - Family Service Center in St. Francisville
 Willis Knighton South Hospital
 Willis Knighton Bossier Health Center
 Willis Knighton Medical Center
 Willis Knighton Pierremont Health
 Winn Community Health Center in Winnfield
 Winn Parish Medical Center in Winnfield
 Women's Health Care Ob-Gyn in Alexandria
 Wyche T. Coleman Clinic in Coushatta



LHCQF.org

LOUISIANA HEALTH CARE QUALITY FORUM

8550 United Plaza Blvd. | Suite 301 | Baton Rouge, LA 70809 | 225.334.9299